

# Tuscan Collection

Genuine Moulded Clay Pavers  
with Bold Character and Unique Sizes



*King William*



*Rustique*



*Cumberland*



*Bayshore*

The Natural Material for Lasting Color



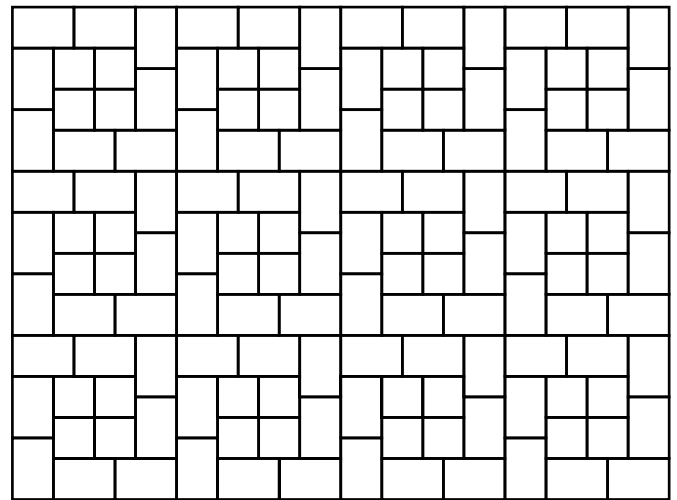
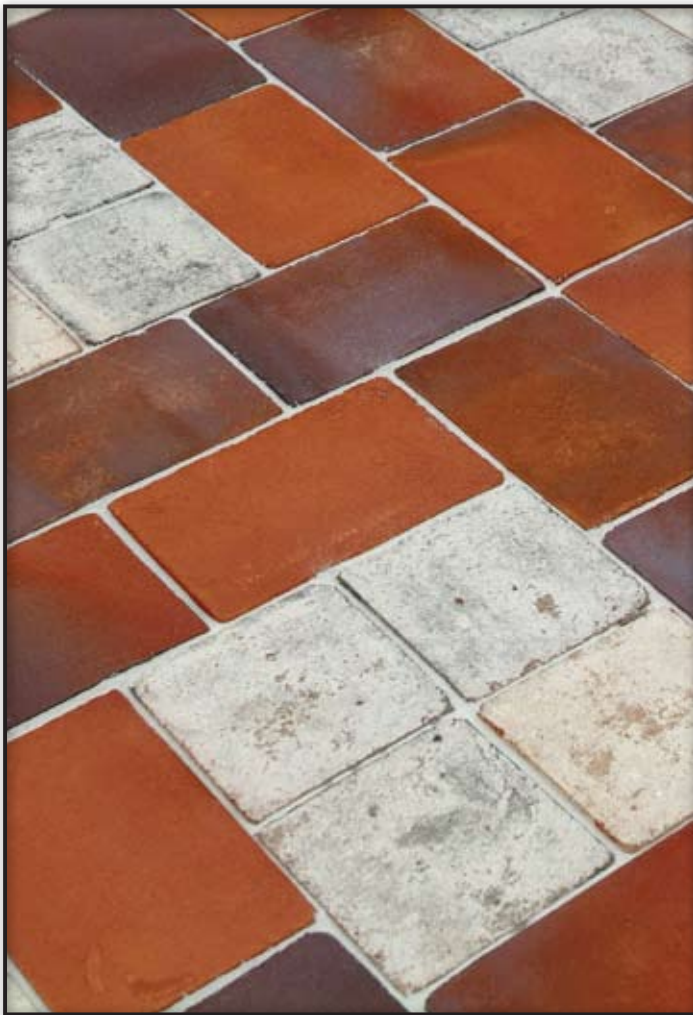
# Product Specifications

SIZE	WEIGHT	PCS./STRAP	PCS./CUBE	SQ. FT./CUBE
6x6	5.60 lbs. ea.	6 straps-65 ea.	390 pcs.	97 sq. ft.
6x9	8.0 lbs. ea.	4 straps-65 ea.	260 pcs.	97 sq. ft.
<b>ASTM</b>				
C902, Class SX, App. PS, Type II				

## Color Selections

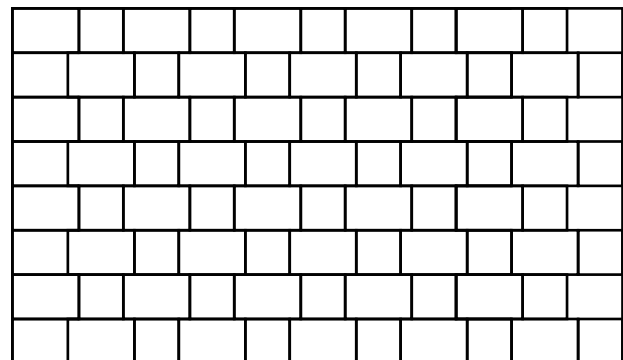
King William, Rustique, Bayshore, and Cumberland

## Our Unique Sizes Allow for Distinctive Patterns!



### Window Panes

Per Sq. Ft.: 2 pieces of 6x9 and 1 piece of 6x6



### Flemish Bond

Per Sq. Ft.: 1.6 pieces of 6x9 and 1.6 pieces of 6x6

There are many more patterns available at our web site!

[www.redlandbrick.com](http://www.redlandbrick.com)